

SCP series

SMD Devices

Features

- ◇ SMD thermistor disk.
- ◇ High voltage and great current



Typical applications

- ◇ Exchanger
- ◇ Main distribution
- ◇ Local internet
- ◇ ADSL

Specification

Part number	R (25℃)	V _{max} (VAC)	I _H (mA)	I _T (mA)	Over current	Surge current	Power induction	Failure mode	Fig
SCP-300-251EM-AF	25	250	70	200	II	I	/	I	1
SCP-400-381EM-AF	40	380	60	140	II	III	I	II	1
SCP-250-301EM-BF	25	300	120	250	II	II	/	I	2
SCP-300-301EM-BF	30	300	100	220	II	II	I	I	2

● **I_H** = Hold current: max current at which the device will not trip at 25℃ still air.

● **I_T** = Trip current: min current at which the device will always trip at 25℃ still air.

● **V_{max}** = Max voltage device can withstand without damage.

● **Over current** ($\Delta R\% \leq 10\%$): I: 220V, 2A, 30min, once II: 250V, 3A, 60s on, 600s off, 10 times

● **Surge current** ($\Delta R\% \leq 30\%$): I: 10/310 μ s, 1.0KV, 3min off, 10 times II: 10/750 μ s, 1.0KV, 1min off, 30 times

III: 10/750 μ s, 1.5KV, 1min off, 30 times

● **Power induction** ($\Delta R\% \leq 20\%$): I: 600V, R_s 600 Ω , 1s on, 60s off, 10 times

● **Failure mode** (no arcing or burning): I: 250V, 3A, 15min; II: 380V, R_s 10 Ω , 15min

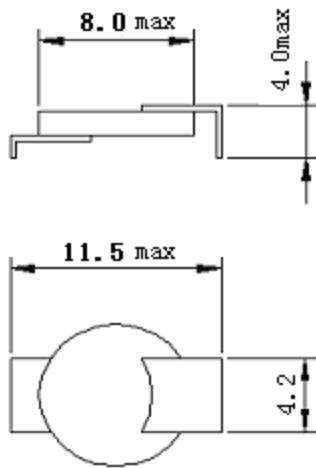


Fig. 1

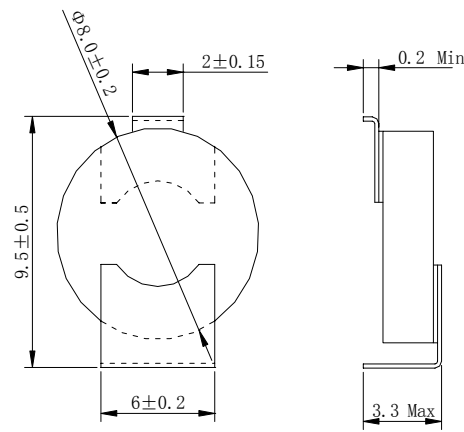


Fig. 2

Part Numbering System

SCP – 400- 381 E M

1 2 3 4 5

1. SCP: SCP series

2. 400: 40 ohm

3. 381: Max. voltage 380 V

4. E: SMD

5. L: ±15%, M: ±20%, N: ±25%

Package Information

Tape & Reel: 1500pcs per reel.

Warning:

Use thermistors only within the specified temperature operating range.

Use thermistors only within the specified voltage and current ranges.

Environmental conditions must not harm the thermistors. Use thermistors only in normal atmospheric conditions. Avoid use in deoxidizing gases (chlorine gas, hydrogen sulfide gas, ammonia gas, sulfuric acid gas etc), corrosive agents, humid or salty conditions. Contact with any liquids and solvents should be prevented